



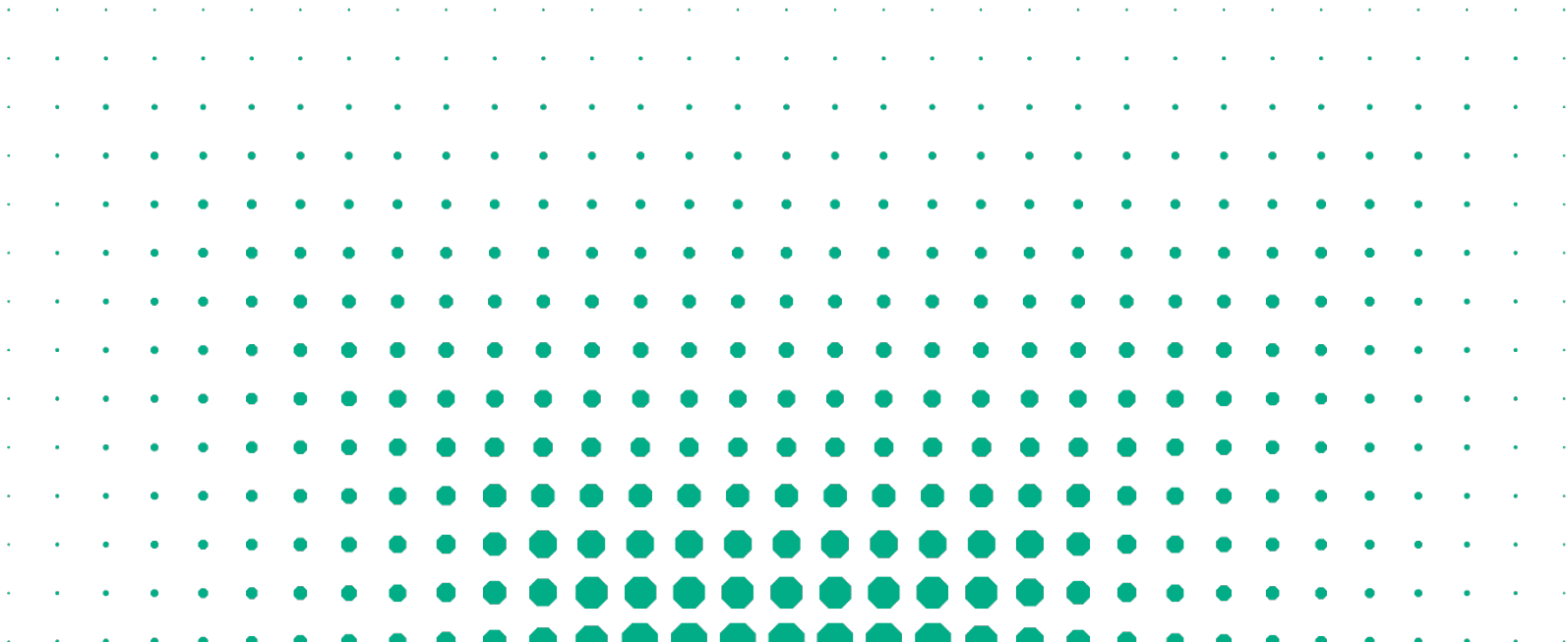
HOUSING PARTNERSHIP NETWORK

Fall Member Meeting

December 5 - December 7, 2018

New Orleans, Louisiana

Participant List





Sara Abramowitz-Hill
 sara@sahahomes.org
 Vice President of Asset Management

Satellite Affordable Housing Associates

1835 Alcatraz Ave
 Berkeley, CA 94703
 510-809-2759



David Adame
 david.adame@cplc.org
 President and CEO

Chicanos Por La Causa

CPLC, 1112 E Buckeye Road
 Phoenix, AZ 85034
 602-237-0700



Leila Ahmadifar
 lahadifar@liifund.org
 Vice President - National Markets and
 Western Regio

Low Income Investment Fund

50 California Street, Suite 2900
 San Francisco, CA 94111
 415-489-6147



David Aiken
 daiken@poua.org
 Senior Project Manager

Planning Office For Urban Affairs

84 State Street, Suite 600
 Boston, MA 02109
 617-350-8885



Mike Akerlow
 mike@cdcutah.org
 CEO

Community Development Corporation of Utah

501 East 1700 South
 Salt Lake City, UT 84105
 801-590-7323



Amos Allen
 aallen@poahcommunities.com
 Vice President, Finance and
 Accounting, POAH Commu

POAH Communities

920 Main Street, Suite 115
 Kansas City, MO 64105
 816-816-4104



Cynthia Alvarez
 calvarez@tndc.org
 Chief Portfolio Officer

Tenderloin Neighborhood Development Corp.

201 Eddy Street
 San Francisco, CA 94102
 415-358-3974



Lena Andrews
 landrews@actionhousing.org
 Senior Development Officer

ACTION-Housing, Inc.

611 William Penn Place, Suite 800
 Pittsburgh, PA 15219
 412-281-2102



Alan Arthur
 aarthur@aeonmn.org
 President/CEO

Aeon

901 North Third Street, Suite 150
 Minneapolis, MN 55401
 612-746-0526



Melissa Baker
 mbaker@reachcdc.org
 Portfolio Asset Manager

REACH Community Development, Inc.

4150 SW Moody Ave
 Portland, OR 97239
 503-501-5723



Miriam Benavides

mabenavides@sahahomes.org
Vice President of HR & Risk
Management

Satellite Affordable Housing Associates

1835 Alcatraz Ave
Berkeley, CA 94703
510-809-2709



Pamela Benoit

pbenoit@reachcdc.org
Chief Operating Officer

REACH Community Development, Inc.

4150 SW Moody Avenue
Portland, OR 97239
503-403-1830



Brian Bieler

bbieler@reachcdc.org
Director of Asset & IT Management

REACH Community Development, Inc.

4150 SE Moody Ave
Portland, OR 97239
503-501-5739



Tonia Biggs

tbiggs@nationalchurchresidences.org
Procurement Specialist

National Church Residences

2335 North Bank Drive
Columbus, OH 43220
614-273-3557



Thomas Bledsoe

bledsoe@housingpartnership.net
President & CEO

Housing Partnership Network

One Washington Mall, 12th FL
Boston, MA 02108
617-259-1802



Margaret Bozik

margaret.bozik@champlainhousingtrust.org
Director Asset Management & Special
Initiatives

Champlain Housing Trust

88 King Street
Burlington, VT 05440
802-861-7370



Gregory Bradbard

gbradbard@hthf.org
President, Hope Through Housing

National Community Renaissance

5156 Tahoe Place
Rancho Cucamonga, CA 91739
949-291-7997



James Britz

jbritz@lihp.org
Executive Vice President

Long Island Housing Partnership, Inc.

180 Oser Avenue, Suite 800
Hauppauge, NY 11788
631-435-4710



Samantha Brown

brown@housingpartnership.net
Senior Associate, Capital Markets

Housing Partnership Network

1 Washington Mall, 12th Floor
Boston, MA 02108
617-356-8255



Sarah Brune

sbrune@nhschicago.org
Manager of Innovation & Public Policy

Neighborhood Housing Services of Chicago

1279 N Milwaukee Ave, 4th Floor
Chicago, IL 60622
773-329-4150



Angela Bruno
 abruno@nhtinc.org
 Chief Financial Officer

National Housing Trust

1101 30th Street NW, Suite 100A
 Washington, DC 20007
 571-373-1720



Jolly Burks
 jolly@homesforamerica.org
 Chief Financial Officer

Homes for America, Inc.

318 Sixth Street
 Annapolis, MD 21403
 410-269-1222



Lyndsay Burns
 burns@housingpartnership.net
 Director, Consumer Empowerment &
 Homeownership Pathways

Housing Partnership Network

One Washington Mall, 12th Floor
 Boston, MA 02108
 617-259-1828



Ellis Carr
 ecarr@capitalimpact.org
 President and CEO

Capital Impact Partners

1400 Crystal Drive, Suite 500
 Arlington, VA 22202
 703-647-2300



Joan Carty
 jcarty@hdfconnects.org
 President and CEO

Housing Development Fund

100 Prospect Street, Suite 100
 Stamford, CT 06901
 203-969-1830



Kimberly Casarez
 kcasarez@housingchannel.org
 Controller

**Housing Channel (formerly Tarrant County
 Housing Partnership)**

4200 South Freeway Ste 307
 Fort Worth, TX 76115
 817-924-5091



Eric Chatman
 chatman@housingpartnership.net
 CFO

Housing Partnership Network

One Washington Mall, 12th FL
 Boston, MA 02108
 617-259-1840



Hassan Chaudhry
 hchaudhry@nevadahand.org
 Associate - Real Estate Development

Nevada HAND, Inc.

295 E Warm Springs Road
 Las Vegas, NV 89119
 702-265-5040



Allison Clark
 aclark@macfound.org
 Associate Director, Impact
 Investments

MacArthur Foundation

140 S. Dearborn St. Suite 1200
 Chicago, IL 60603
 312-917-0327



Rebecca Clark
 rclark@linchousing.org
 CEO

LINC Housing

3590 Elm Avenue
 Long Beach, CA 90807
 909-747-2355



Omayra Colon

colon@housingpartnership.net
Senior Associate, Meeting Operations

Housing Partnership Network

One Washington Mall, 12th Floor
Boston, MA 02108
617-259-1811



Jill Cook

jcook@homewise.org
Manager of Human Resources and
Operational Effecti

Homewise, Inc.

1301 Siler Road Bldg D
Santa Fe, NM 87507
505-955-7033



Patrick Cornett

pcornett@wearehpi.org
Chief Financial Officer

Housing Partnership, Inc.

1512 Crums Lane Suite 401
Louisville, KY 40216
502-855-6483



Robert Cox

robert.cox@reinvestment.com
Sr. Dir., Housing & Commercial RE
Lending

Reinvestment Fund

1700 Market Street, 19th floor
Philadelphia, PA 19103
215-574-5882



Galaan Dafa

galaan@developdetroit.org
Analyst

Develop Detroit

535 Griswold Street, Ste 1600
Detroit, MI 48226
313-960-7707



Jessica Davidson-Sawyer

davidson@housingpartnership.net
Director, Knowledge Management

Housing Partnership Network

One Washington Mall, 12th Floor
Boston, MA 02108
617-259-1827



Paul Davis

paul.davis@corisksol.com
Program Manager

IMA / CORnerstone Risk Solutions

PO Box 2992
Wichita, KS 67201
316-266-6292



Alfredo de la Peña

adelapena@missionfirsthousing.org
Chief Executive Officer

Mission First Housing Group

2042-48 Arch Street, 2nd Floor
Philadelphia, PA 19103
215-557-8414



Cheryl DeBoise

cdeboise@bellwetherhousing.org
Chief Operations & Financial Officer

Bellwether Housing

1651 Bellevue Ave Seattle, WA 98122
206-957-2712



Mark Deitcher

mdeitcher@missionfirsthousing.org
Director of Business Development

Mission First Housing Group

908 Stratford Avenue
Elkins Park, PA 19027
267-505-1042



Amy Demetrowitz
Amyd@champlainhousingtrust.org
Director of Real Estate Development

Champlain Housing Trust

88 King St
Burlington, VT 05403
802-862-6244



Peter Desjardins
pdesjardins@voa.org
Vice President, Asset Management

Volunteers of America

1660 Duke St
Alexandria, VA 22314
703-341-5075



Nina Dooley
nina@linchousing.org
Vice President

LINC Housing Corporation

3590 Elm Avenue
Long Beach, CA 90807
562-684-1125



Paul Downing
downing@housingpartnership.net
Director, Information Systems

Housing Partnership Network

One Washington Mall, 12th Floor
Boston, MA 02108
617-259-1825



Adam Dries
dries@hpnselect.com
Procurement Manager

HPN Select

510 Glenwood Ave Suite 309
Raleigh, NC 27603
919-817-9299



Liza Dube
dube@housingpartnership.net
VP, Communications

Housing Partnership Network

One Washington Mall, 12th Floor
Boston, MA 02108
617-259-1826



Pierre Dugue
dugue@housingpartnership.net
Controller

Housing Partnership Network

One Washington Mall, 12th Floor
Boston, MA 02108
617-370-8668



Catherine Dunham
cdunham@poah.org
Special Advisor

Preservation of Affordable Housing

40 Court Street, Suite 700
Boston, MA 02108
617-449-0884



Tom Earley
tearley@sahahomes.org
Chief Operating Officer

Satellite Affordable Housing Associates

1835 Alcatraz Avenue
Berkeley, CA 94707
510-809-2742



James Eash
jeash@actionhousing.org
Development Officer

ACTION-Housing, Inc.

611 William Penn Place, Suite 800
Pittsburgh, PA 15219-6927
412-281-2102



Todd Eatmon

todd.eatmon@commonbond.org
Vice President of Property
Management

CommonBond Communities

1080 Montreal Avenue
St. Paul, MN 55116
651-312-3340



Kathy Ebner

kathy@homesforamerica.org
President and CEO

Homes for America, Inc.

318 Sixth Street
Annapolis, MD 21403
410-269-1222



Peter Elkowitz

pelkowitz@lihp.org
President & CEO

Long Island Housing Partnership, Inc.

180 Oser Avenue, Suite 800
Hauppauge, NY 11788
631-435-4710



Rennie Elliott

rennie@frameworkhomeownership.org
Vice President, Strategy

Framework Homeownership

One Washington Mall, 12th Floor
Boston, MA 02108
415-261-7160



Rob Evans

revans@inhp.org
COO & EVP Homeownership
Initiatives

**Indianapolis Neighborhood Housing
Partnership (INHP)**

3550 N Washington Blvd
Indianapolis, IN 46205
317-610-4650



Donald Falk

dfalk@tndc.org
Chief Executive Officer

Tenderloin Neighborhood Development Corp.

201 Eddy Street
San Francisco, CA 94102
415-264-7949



Michael Finn

mfinn@nationalcore.org
CFO

National Community Renaissance

9421 Haven Ave.
Rancho Cucamonga, CA 91730
909-204-3438



Jill Fioravanti

jillbfioravanti@gmail.com
Consultant

Consultant

4011 Thornapple Street
Chevy Chase, MD 20815
805-901-8463



Jill Fleming

jffleming@capitolhillhousing.com
SVP & Deputy Director

Capitol Hill Housing

1620 12th Avenue, Suite 205
Seattle, WA 98122
206-204-3820



Paola Flores

pflores@jamboreehousing.com
Senior Asset Manager

Jamboree Housing Corporation

17701 Cowan Avenue, Suite 200
Irvine, CA 92614
949-214-2316



Rob Fossi
rfossi@tcbinc.org
Mid-Atlantic Regional Director

The Community Builders

1349 Massachusetts Ave., SE
Washington, DC 20003
202-552-2507



Christopher Frederick
frederick@hpnselect.com
Procurement Director

HPN Select

510 Glenwood Ave., Suite 222
Raleigh, NC 27603
919-817-9058



Susan Friedland
sfriedland@sahahomes.org
Executive Director

Satellite Affordable Housing Associates

1835 Alcatraz Ave
Berkeley, CA 94703
510-809-2762



Carol Galante
carol.galante@berkeley.edu
Faculty Director

Terner Center, University of California Berkley

2150 Kittredge St, Suite 300
Berkeley, CA 94704
510-859-7100



Tracy Gargaro
tgargaro@rmcommunities.org
Chief Operating Officer / Chief
Financial Officer

Rocky Mountain Communities

225 E 16th Avenue, Suite 600
Denver, CO 80203
720-305-9803



Jean Gingras
gingras@housingpartnership.net
VP, Financial Planning & Analysis

Housing Partnership Network

One Washington Mall, 12th Fl
Boston, MA 02108
617-370-8673



Lorraine Gordon
lgordon@enterprisecommunity.com
VP, Human Resources

Enterprise Community Investment Inc.

1100 Broken Land Parkway, Suite 700
Columbia, MD 21044
410-772-2644



Neill Goslin
neill@self-help.org
Director of Development

Self-Help

301 W. Main St.
Durham, NC 27701
919-956-4442



Benjamin Greenberg
greenberg@housingpartnership.net
Director, Lending

Housing Partnership Network

One Washginton Mall, 12th Fl
Boston, MA 02108
617-259-1834



Julie Gugin
julie@hocmn.org
Executive Director

Minnesota Homeownership Center

1000 Payne Avenue, Suite 200
Saint Paul, MN 55130
651-236-8973



Laura Hall

laura.hall@eahhousing.org
Chief Operating Officer

EAH Housing

22 Pelican Way
San Rafael, CA 94901
415-295-8879



Barbara Halverson

bhalverson@aeon.org
Executive Vice President of Property Operations

Aeon

901 North 3rd Street, Suite 150
Minneapolis, MN 55401
612-746-0525



Dana Hanchin

dhanchin@hdcweb.com
President and CEO

HDC MidAtlantic

4-6 West King Street
Lancaster, PA 17603
717-291-1911



Joe Hanson

jhanson@inhp.org
CFO & EVP Strategic Initiatives

Indianapolis Neighborhood Housing Partnership (INHP)

3550 North Washington Blvd
Indianapolis, IN 46205
317-610-4680



Warren Hanson

whanson@gmhf.com
President/CEO

Greater Minnesota Housing Fund

332 Minnesota Street, Suite 1201 East
St Paul, MN 554101
651-350-7220



David Harms

harms@gchp.net
Project Manager

Gulf Coast Housing Partnership

1610A Oretha Castle Haley Blvd
New Orleans, LA 70113
504-525-2505



Bernard Hauser

bhauser@nationalcore.org
Risk Manager

National Community Renaissance

9421 Haven Ave.
Rancho Cucamonga, CA 91730
909-204-3470



Claude Hicks

chicks@hdcweb.com
Director of Real Estate Development

HDC MidAtlantic

4-6 West King Street Suite 4
Lancaster, PA 17603
717-291-1911



Blake Hopkins

bhopkins@aeon.org
Vice President of Housing Development

Aeon

901 N. 3rd Street, Suite 150
Minneapolis, MN 55401
612-746-0517



Caroline Horton

chorton@aeonmn.org
Chief Financial Officer

Aeon

901 North 3rd Street, Suite 150
Minneapolis, MN 55401
612-746-4878



Hilliary Jeffries
 hjeffries@nevadahand.org
 Chief Strategic Initiatives Officer

Nevada HAND

295 E. Warm Springs Road, Suite 101
 Las Vegas, NV 89119
 702-410-2722



Tracy Kaufman
 tkaufman@nhtinc.org
 Chief Operating Officer

National Housing Trust

1101 30th Street, NW Suite 100A
 Washington, DC 20007
 202-333-8931



William Kelsey
 kelsey@housingpartnership.net
 President, Housing Partnership
 Insurance Exchange

Housing Partnership Network

One Washington Mall, 12th Floor
 Boston, MA 02108
 617-259-1805



Tara Kenchen
 tkenchen@ncinitiative.org
 CEO

North Carolina Community Development Initiative

5800 Faringdon Place
 Raleigh, NC 27609
 919-828-5655



Richard Kingston
 kingston@hpnselect.com
 VP Sustainability

HPN Select

One Washington Mall, 12th Fl
 Boston, MA 02108
 203-376-5151



Elizabeth Kneebone
 ekneebone@berkeley.edu
 Research Director

UC Berkeley Turner Center for Housing Innovation

2150 Kittredge Street, Suite 3A
 Berkeley, CA 94704
 510-859-7074



Kevin Krejci
 krejci@gchp.net
 Chief Information Officer

Gulf Coast Housing Partnership

1610A Oretha Castle Haley Blvd
 New Orleans, LA 70113
 504-525-2505



LaToya Kyle
 lkyle@liifund.org
 Senior Loan Officer

Low Income Investment Fund

1230 Peachtree st suite 1900
 Atlanta , GA 30309
 404-784-4006



Kathy Laborde
 laborde@gchp.net
 President & CEO

Gulf Coast Housing Partnership

1227 Webster Street
 New Orleans, LA 70118
 504-232-9377



Mark Lederhos
 lederhos@housingpartnership.net
 Senior Vice President

Housing Partnership Network

One Washington Mall, 12th Fl
 Boston, MA 02108
 617-259-1819



Vilda Lo

lo@housingpartnership.net
Director of Financial Planning and
Analysis

Housing Partnership Network

One Washington Mall, 12th Fl
Boston, MA 02108
617-370-8671



Mike Loftin

mloftin@homewise.org
Chief Executive Officer

Homewise, Inc.

1301 Siler Road, Bldg. D
Santa Fe, NM 87507
505-983-6214



Jim Logue

jlogue@cinnaire.com
Chief Public Policy Officer

Cinnaire

1118 South Washington Ave
Lansing, MI 48910
517-482-8555



Richard Loo

rloo@bellwetherhousing.org
Director of Real Estate Development

Bellwether Housing

1651 Bellevue Ave
Seattle, WA 98122
206-957-2729



Christopher LoPiano

clopiano@cpdc.org
Senior Vice President

**Community Preservation and
Development Corporation**

1083 Coleville Road, Suite 1150
Silver Spring, MD 20910
202-885-9567



Daniel Lorraine

dlorraine@nationalcore.org
Senior VP Property Management

National Community Renaissance

9421 Haven Avenue
Rancho Cucamonga, CA 91730
909-483-2444



Diane Luther

diane.luther@eahhousing.org
Advocacy Manager

EAH Housing

22 Pelican Way
San Rafael, CA 94901
415-295-8862



David Maggio

maggio@hpequitytrust.com
VP Acquisitions and Asset
Management

HPET

820 1st St NE Suite 760
Washington, DC 20002
202-888-2302



Michele Mamet

mmamet@mercyhousing.org
Chief Operating Officer

Mercy Housing

1999 Broadway, Suite 1000
Denver, CO 80202
303-830-3484



Linda Mandolini

lmandolini@edenhousing.org
President

Eden Housing

22645 Grand Street
Hayward, CA 94541
510-582-1460



Virginia Mara
 mara@housingpartnership.net
 Director, Portfolio Management

Housing Partnership Network

One Washington Mall 12th Floor
 Boston, MA 02108
 617-259-1813



Daniel Marks Cohen
 dcohen@housingpartnership.com
 VP Director of Real Estate
 Development / New York

NYC Housing Partnership

242 West 36th Street
 New York, NY 10018
 646-217-3373



Daniel Martin
 dmartin@housingpartnership.com
 President & CEO

NYC Housing Partnership

242 W. 36th Street , 3rd Floor
 New York, NY 10018
 646-217-3372



Sonya Mays
 sonya@developdetroit.org
 CEO

Develop Detroit

535 Griswold St., Ste 1600
 Detroit, MI 48226
 313-960-7701



Kamilah McAfee
 kmcafee@whdc.org
 Vice President for Real Estate
 Development

Wesley Housing Development Corporation

5515 Cherokee Avenue
 Alexandria, VA 22312
 703-642-3830



Michael McCabe
 mccabe@housingpartnership.net
 VP Capital Markets

Housing Partnership Network

One Washington Mall, 12th Fl
 Boston, MA 02108
 571-455-6394



Stacy McMahon
 smcmahon@aeon.org
 Vice President, Asset Management

Aeon

901 North 3rd Street, Suite 150
 Minneapolis, MN 55401
 612-746-0520



Linda Metropulos
 lmetropulos@actionhousing.org
 Director of Housing and
 Neighborhood Development

ACTION-Housing, Inc.

611 Wm Penn Place, Suite 800
 Pittsburgh, PA 15219
 412-281-2102



Bart Mitchell
 bmittchell@tcbinc.org
 President and CEO

The Community Builders

185 Dartmouth Street
 Boston, MA 02116
 857-221-8603



Michael Monte
 mmonte@champlainhousingtrust.org
 COO / CFO

Champlain Housing Trust

88 King Street
 Burlington, VT 05401
 802-861-7300



Kate Monter Durban

kmonter@chnhousingpartners.org
Assistant Director

CHN Housing Partners (formerly Cleveland Housing Network)

1310 W. 106 Street
Cleveland, OH 44102
216-774-2428



Frank Mooney

fmooney@whdc.org
President, Wesley Property Management Company

Wesley Housing Development Corporation

5515 Cherokee Avenue, Suite 200
Alexandria, VA 22312
703-642-3830



Manuel Muelle

muelle@housingpartnership.net
VP, Membership and International Exchange

Housing Partnership Network

One Washington Mall, 12th Floor
Boston, MA 02108
617-259-1803



Shelley Murphy

smurphy@whdc.org
President/CEO

Wesley Housing Development Corporation

5515 Cherokee Avenue, Suite 200
Alexandria, VA 22312
703-642-3830



Mary Murtagh

mary.murtagh@eahhousing.org
President and CEO

EAH Housing

22 Pelican Way
San Rafael, CA 94901
415-295-8824



Kevin Myren

kevin.myren@commonbond.org
CFO & Vice President of Administration

CommonBond Communities

4941 Logan Avenue South
Minneapolis, MN 55419
651-290-6231



Ogonyaya Newman

onewman@jpbfoundation.org
Program Officer

The JPB Foundation

875 Third Avenue, 29th Floor
Brooklyn, NY 10022
212-364-6303



Kevin Nowak

knowak@chnhousingpartners.org
Director of Strategic Initiatives and General Coun

CHN Housing Partners (formerly Cleveland Housing Network)

2999 Payne Ave, Suite 306
Cleveland, OH 44114
216-774-2417



John O'Callaghan

jocallaghan@andpi.org
President & CEO

Atlanta Neighborhood Development Partnership, Inc.

229 Peachtree Street NE, Suite 705
Atlanta, GA 30303
404-420-1591



Liz Orlin

lorlin@tndc.org
Chief Operating Officer

Tenderloin Neighborhood Development Corporation

201 Eddy Street
San Francisco, CA 94102
415-358-3936



Colleen Otremsky
cotremsky@njclf.com
Homeownership Manager

Community Loan Fund of New Jersey In

108 Church Street 3rd
NEW BRUNSWICK, NJ 08901-0000
856-912-8452



Matthew Padron
mpadron@hdcweb.com
Development Officer

HDC MidAtlantic

4-6 West King Street, Suite 4
Lancaster, PA 17603
717-291-1911



Cynthia Parker
cparker@bridgehousing.com
CEO

BRIDGE Housing Corporation

600 California Street, Suite 900
San Francisco, CA 94108
415-321-3501



Terry Parker
tparker1@good-sam.com
Vice President Affordable Housing

Evangelical Lutheran Good Samaritan Society

4800 W 57th St
Sioux Falls, SD 57108
605-362-2216



David Paull
dpaul@nevadahand.org
Director of Real Estate Development

Nevada HAND, Inc.

295 E Warm Springs Rd., Suite 101
Las Vegas, NV 89119
702-544-4281



Jim Peffley
jpeffley@cinnare.com
Chief Strategy Officer

Cinnare - Delaware

100 W. 10th Street, Suite 502
Wilmington, DE 19801
302-655-1420



Matt Perrenod
mperrenod@gmail.com
Principal

Mission Enterprise Strategies

3609 Royal Street
New Orleans, LA 70117
857-202-7220



Ben Phillips
ben@developdetroit.org
Vice President, Real Estate

Develop Detroit

535 Griswold Street, Suite 1600
Detroit, MI 48226
313-960-7702



Gilbert Piette
gilp@prosperahcs.org
Executive Director

Prospera Housing Community Services

8610 N. New Braunfels, Suite 500
San Antonio, TX 78217
210-259-6243



Michael Pitchford
mpitchford@cpdc.org
President & CEO

Community Preservation and Development Corporation

8403 Colesville Road, Suite 1150
Silver Spring, MD 20910
202-885-9540



Nicholas Pohl
 npohl@capitalimpact.org
 Senior Loan Officer

Capital Impact Partners
 28 W. Adams, Suite 1404
 Detroit, MI 48226
 313-230-1255



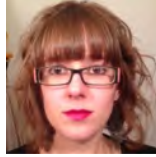
Tracy Pride
 tracy.pride@imacorp.com
 Director of Real Estate Practice

IMA Financial Group
 1705 17th Street, Suite 100
 Denver, CO 80126
 303-615-7507



Andrew Puricelli
 apuracelli@aafcpa.com
 Manager

AAFCPAs
 50 Washington Street
 Westborough, MA 01581
 508-366-9100



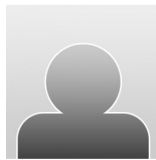
Sarah Ralich
 sralich@actionhousing.org
 Energy & Construction Manager

ACTION-Housing, Inc.
 611 William Penn Place, Suite 800
 Pittsburgh, PA 15219
 412-281-2102



Ian Rawhauser
 irawhauser@hdcweb.com
 Senior Development Officer

HDC MidAtlantic
 4-6 West King Street, Suite 4
 Lancaster, PA 17603
 717-291-1911



Todd Reeder
 todd@cdcutah.org
 Director of Real Estate Development

Community Development Corporation of Utah
 501 E. 1700 S.
 Salt Lake City, UT 84103
 801-994-7222



Rebecca Regan
 regan@housingpartnership.net
 EVP & President, Capital Markets

Housing Partnership Network
 One Washington Mall, 12th Fl
 Boston, MA 02108
 617-259-1820



Saayali Rege
 rege@housingpartnership.net
 Senior Associate, Social Enterprise
 Marketing

Housing Partnership Network
 One Washington Mall, 12th Fl
 Boston, MA 02108
 617-259-1839



Katie Rodriguez
 rodriguez@housingpartnership.net
 Vice President, Lending & Investment

Housing Partnership Network
 One Washington Mall, 12th Floor
 Boston, MA 02130
 617-259-1817



Richard Rohrman
 rrohrman@newcommunity.org
 CEO

New Community Corporation
 233 West Market St
 Newark, NJ 07103
 732-309-6500



Candice Rosalez
 candice.rosalez@ppl-inc.org
 Regional Property Manager

Project for Pride in Living

1035 East Franklin Avenue
 Minneapolis, MN 55404
 612-455-5187



Danielle Rosen
 drosen@njclf.com
 Director of Operations - CAPC

New Jersey Community Capital

108 Church Street
 New Brunswick, NJ 08901
 732-640-2061



Shannon Ross
 ross@housingpartnership.net
 Vice President, Government
 Relations

Housing Partnership Network

820 First Street, NE Suite 760
 Washington, DC 20002
 202-677-4292



Michael Ruane
 mruane@nationalcore.org
 Executive Vice President

National Community Renaissance

9421 Haven Ave
 RANCHO CUCAMONGA, CA 91730
 909-483-2444



Danielle Samalin
 danielle@frameworkhomeownership.org
 CEO

Framework Homeownership

1432 E Burnside
 Portland, OR 97214
 503-726-8552



Jose Sanchez
 jsanchez@jamboreehousing.com
 VP of Asset Management

Jamboree Housing Corporation

17701 Cowan Avenue, Suite 200
 Irvine, CA 92614
 949-214-2343



Akobe Sandy
 asandy@macfound.org
 Impact Investment Associate

MacArthur Foundation

140 S. Dearborn St. Suite 1200
 Chicago, IL 60603
 312-917-0303



Rick Saperstein
 rsaperstein@abodecommunities.org
 Executive VP & CFO

Abode Communities

1149 South Hill Street, Suite 700
 Los Angeles, CA 90015
 213-225-2784



Deidre Schmidt
 deidre.schmidt@commonbond.org
 President & CEO

CommonBond Communities

1080 Montreal Avenue
 St. Paul, MN 55116
 651-290-6205



Cade Scholl
 cscholl@mercyhousing.org
 Controller

Mercy Housing

1999 Broadway
 Denver, CO 80202
 303-830-6235



Robert Schraeger

Robert.Schraeger@eahhousing.org
Vice President Real Estate
Management

EAH Housing

22 Pelican Way
San Rafael, CA 94901
415-295-8899



Peter Serafino

pserafino@wayfindersma.org
Project Manager

Way Finders, Inc. (formerly HAPHousing)

120 Maple Street, 4th Floor
Springfield, MA 01103
413-233-1728



Patrick Sheridan

psheridan@voa.org
Executive Vice President, Housing

Volunteers of America

1660 Duke Street
Alexandria, VA 22314
703-341-5095



Mike Shoheit

mshoheit@nevadahand.org
Executive Vice President, Real Estate
Development

Nevada HAND, Inc.

10465 Cloud Whisper Drive
LAS VEGAS, NV 89135
702-769-1536



Kristin Siglin

siglin@housingpartnership.net
Senior Vice President, Policy

Housing Partnership Network

820 First Street, NE Suite 760
Washington, DC 20002
202-677-4294



Jeff Smith

smith@hpselect.com
Procurement Manager

HPN Select

510 Glenwood Avenue Suite 222
Raleigh, NC 27603
919-896-3175



Steve Smith

smith@ahcinc.org
SR VP

AHC Inc.

2230 North Fairfax Dr. #100
Arlington, VA 22201
571-236-5957



Stephanie Socal

ssocal@iff.org
Director of Lending, Affordable
Housing

IFF

333 S Wabash Ste 2800
Chicago, IL 60604
312-596-5122

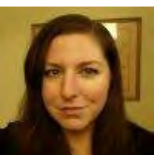


Steve Spears

sspears@mercyhousing.org
SVP Chief Financial Officer

Mercy Housing

1999 Broadway, 10th Floor
Denver, CO 80202
303-830-3317



Eden Spencer

espencer@gmhchousing.org
Director of Single Family Housing

Greater Metropolitan Housing Corporation

15 South 5th St, Suite 710
Minneapolis, MN 55402
612-339-0601



Eve Stewart

estewart@sahahomes.org
VP of Real Estate Development

Satellite Affordable Housing Associates

1835 Alcatraz Avenue
Berkeley, CA 94610
510-809-2754



Tayani Suma

tsuma@andpi.org
Vice President, Real Estate

Atlanta Neighborhood Development Partnership, Inc.

229 Peachtree Street NE, Suite 705
Atlanta, GA 30303-1605
404-420-1607



Lawrence Swanson

lswanson@actionhousing.org
Executive Director

ACTION-Housing, Inc.

611 William Penn Place
Pittsburgh, PA 15219
412-281-2102



Julie Sweeney

sweeney@housingpartnership.net
Consultant

Housing Partnership Network

One Washington Mall, 12th Floor
Boston, MA 02108
781-492-0505



Mary Sweeney

msweeney@housingpartnership.net
Project Manager, Consumer
Empowerment & Homeownership
Pathways

Housing Partnership Network

One Washington Mall, 12th Floor
Boston, MA 02108
617-259-1823



Ryan Sweeney

ryans@prosperahcs.org
VP of Asset Management

Prospera Housing Community Services

8610 N. New Braunfels Avenue, Suite 500
San Antonio, TX 78217
210-821-4330



Richard Taft

rtaft@rmcommunities.org
President & CEO

Rocky Mountain Communities

225 East 16th Ave, Suite 600
Denver, CO 80203
303-863-8651



Granvel Tate

gtate@mercyhousing.org
Director of Real Estate

Mercy Housing

260 Peachtree St, Suite 1800
Atlanta, GA 30303
404-975-4192



Bob Tucker

rtucker@cclfchicago.org
COO and Executive Vice President

Chicago Community Loan Fund

29 E Madison St Ste 1700
Chicago, IL 60602
312-252-0443



D. Valentine

dvalentine@bridgehousing.com
EVP & CFO

BRIDGE Housing Corporation

600 California Street, Suite 900
San Francisco, CA 94108
415-321-3577



Dan Valliere
 dvalliere@reachcdc.org
 CEO

REACH Community Development, Inc.

4150 SW Moody Ave
 Portland, OR 97239
 503-519-2033



Mark Van Brunt
 mvanbrunt@razafund.org
 Chief Operating Officer

Raza Development Fund

1 E. Washington #2250
 Phoenix, AZ 85004
 602-417-1401



Julia Van
 van@housingpartnership.net
 Vice President, Philanthropy

Housing Partnership Network

One Washington Mall, 12th Fl
 Boston, MA 02108
 617-259-1833



Mary Vasys
 mwvasys@vasysconsulting.com
 President

Vasys Consulting Ltd.

30 North Michigan Avenue, Suite 1603
 Chicago, IL 60602
 312-641-5109



Mick Vergura
 mvergura@tcbinc.org
 Chief Financial Officer

The Community Builders

744 Main Street
 Concord, MA 01742
 617-378-5059



Mark Vernon
 vernon@hpselect.com
 President

HPN Select

One Washington Mall, 12th Floor
 Boston, MA 02108
 617-874-0283



Jessica Vogt
 vogt@hpselect.com
 Procurement Professional

HPN Select

510 Glenwood Avenue, Suite 222
 Raleigh, NC 27603
 919-817-7086



Michelle Volpe
 mvolpe@bluehubcapital.org
 Loan Fund President

BlueHub Capital

10 Malcolm X Boulevard
 Boston, MA 02199
 617-427-3509



Nancy Wagner-Hislip
 nancy.wagner-hislip@reinvestment.com
 Chief Investment Officer

Reinvestment Fund

1700 Market Street, 19th Floor
 Philadelphia, PA 19103
 267-334-7751



Thomas Washburn
 twashburn@aafcpa.com
 Partner

AAFCPAs

50 Washington Street
 Westborough, MA 01581
 508-366-9100



William Weber

wweber@healthybuilding.net
Collective Impact Director

Healthy Building Network

1710 Connecticut Avenue, NW
Washington, DC 20009
612-396-8156



Charles Wehrwein

wehrwein@housingpartnership.net
Chief Operating Officer

Housing Partnership Network

One Washington Mall, 12th FL
Boston, MA 02108
202-669-4247



John Welsh

welsh@ahcinc.org
Vice President-Multifamily Group

AHC Inc.

2230 N. Fairfax Drive Suite 100
Arlington, VA 22201
703-486-0626



Laura Wheeler

wheeler@hpnselect.com
Procurement Specialist

HPN Select

510 Glenwood Avenue, Suite 222
Raleigh, NC 27603
919-896-5393



Netta Whitman

netta.whitman@homeportohio.org
Director of Housing Advisory Services

Homeport

3443 Agler Rd
Columbus, OH 43219
614-545-4892



Lisa Wilcox-Erhardt

lisa.wilcox-erhardt@commonbond.org
Executive Vice President of Housing
and Services

CommonBond Communities

1080 Montreal Avenue
St. Paul, MN 55116
651-290-6238



Jeremy Wilkening

jwilkening@capitolhillhousing.org
Vice President of Real Estate
Development

Capitol Hill Housing

1620 12th Ave, Suite 205
Seattle, WA 98122
206-204-3830



Fabian Williams

williams@housingpartnership.net
Administrative Assistant, Operations

Housing Partnership Network

One Washington Mall, 12th floor
Boston, MA 02108
617-899-7997



Anne Wilson

awilson@chworks.org
SVP, Housing & Real Estate
Development

Community HousingWorks

2815 Camino del Rio South, Suite 350
San Diego, CA 92108
619-450-8709



Christopher Wilson

chris.wilson@ppl-inc.org
Director of Real Estate Development

Project for Pride in Living

1035 East Franklin Avenue
Minneapolis, MN 55404
612-455-5216



D. Morgan Wilson

mwilson@tcbinc.org

Vice President, Development
Operations

The Community Builders

185 Dartmouth St
Boston, MA 02116
857-221-8779



Jubek Yongo-Bure

jubek@developdetroit.org

Project Analyst

Develop Detroit

535 Griswold Street, Suite 1600
Detroit, MI 48226
313-960-7706



Clark Ziegler

cziegler@mhp.net

Executive Director

Massachusetts Housing Partnership

160 Federal Street
Boston, MA 02110
857-317-8585