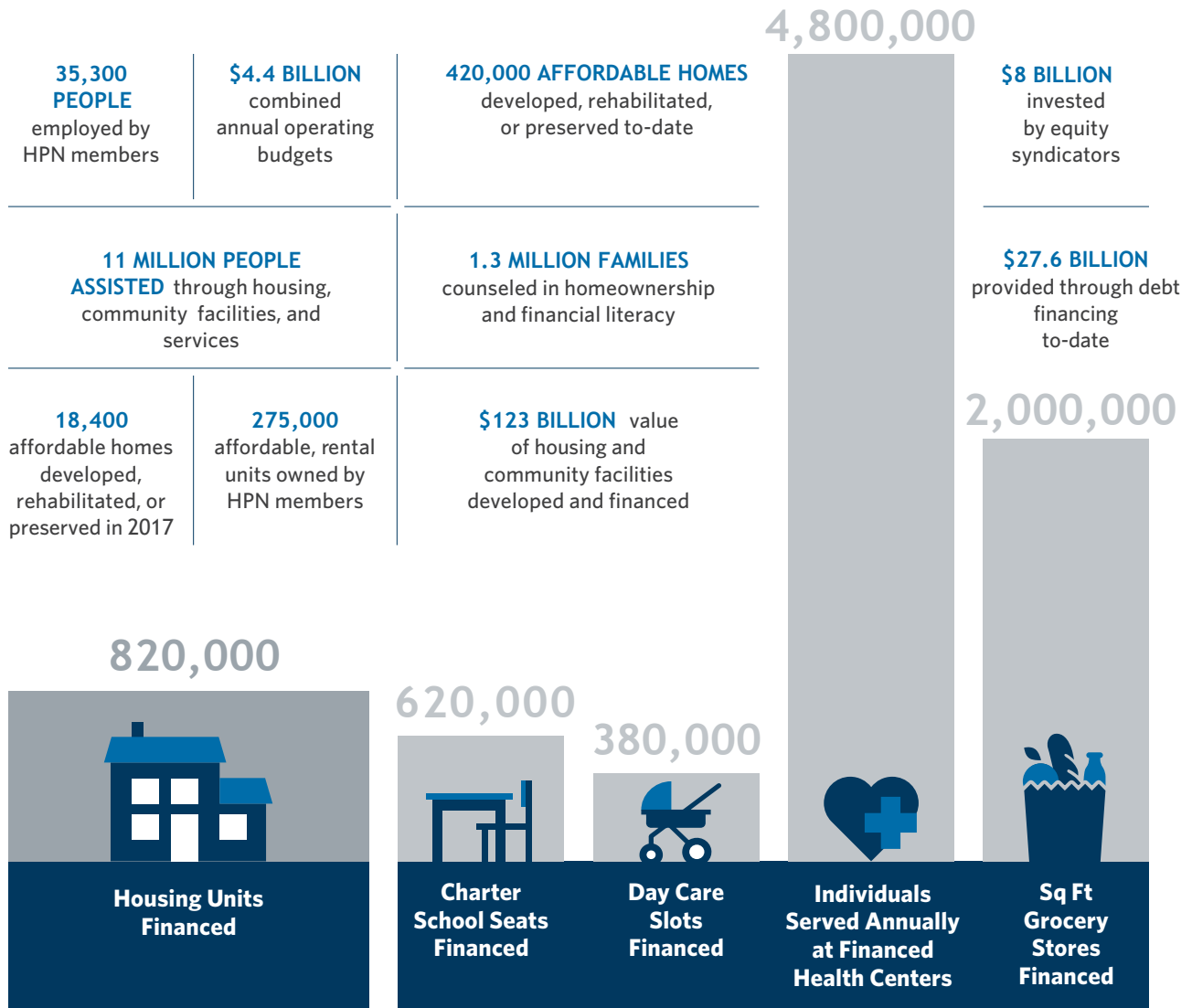


Membership Profile

The **Housing Partnership Network** is a business collaborative of 94 of the nation's leading housing and community development nonprofits. These organizations share a common mission to provide affordable housing and sustainable communities for low- and moderate-income households. Members collaborate through peer exchanges that advance best practices in the field, and come together to create innovative, collectively-owned businesses that enhance their operations and impact. On Capitol Hill, HPN advocates for federal housing policies that enhance the long-term sustainability and impact of housing and community development nonprofits.

IMPACT OF HPN MEMBERS



**Member impact estimated based on member reported data and other public information*

DIVERSITY AND BREADTH OF HPN MEMBER'S CAPACITY



77
MEMBERS DEVELOP REAL ESTATE

- 73 Rental developers
- 33 Homeownership/for-sale developers
- 62 Mixed-income developers
- 57 Mixed-use developers
- 34 Commercial developers
- 13 Offer lease-purchase or other hybrid-tenure models



45
MEMBERS ARE LENDERS AND INVESTORS

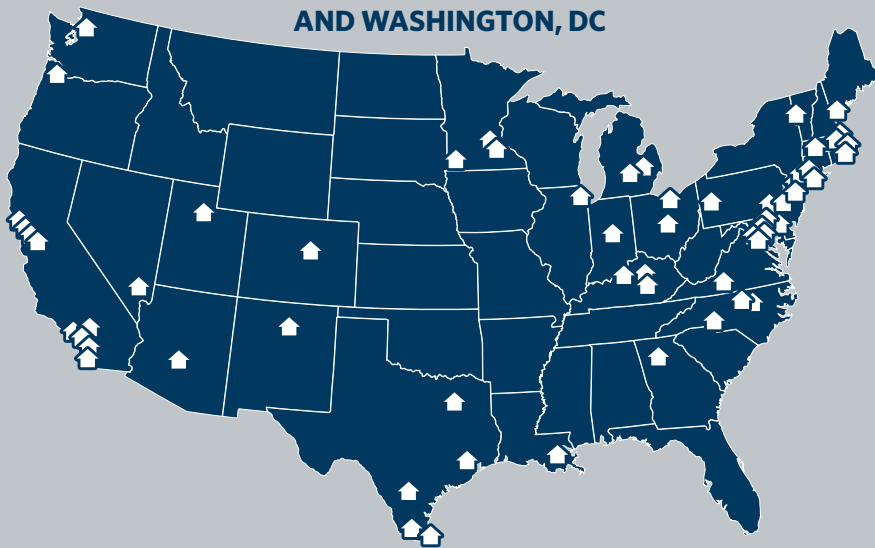
- 34 Commercial/ development lenders
- 25 Consumer mortgage lenders
- 5 Equity syndicators
- 36 Certified CDFIs
- 20 Aeris Rated
- 18 FHLB Members



36
MEMBERS ARE HOUSING COUNSELORS

- 31 Pre-purchase counseling & education
- 24 Foreclosure prevention
- 31 Post-purchase counseling & education
- 21 Renter counseling
- 15 Homelessness prevention
- 3 Reverse mortgage counseling

MEMBERS ARE HEADQUARTERED IN 27 STATES AND WASHINGTON, DC



WHO DO MEMBERS SERVE IN THEIR RENTAL HOUSING UNITS?



75
SERVE FAMILIES WITH CHILDREN



67
SERVE SENIORS



59
SERVE PERSONS WITH SPECIAL NEEDS
(formerly homeless or disabled persons)